



Bennington's
MONUMENT
ARTS & CULTURAL CENTER

SELF-GUIDED TOUR / GUIDE TO THE GALLERIES

Galleries 1, 2, & Lobby Gallery ›

NOVEMBER 8 – DECEMBER 28, 2025

2025 Holiday Art Show

REGIONAL ARTISTS FEATURED AT THE MAC CENTER

In celebration of the holiday season, The MAC Center presents the 2025 Holiday Art Show, an exhibition made up of regional artists offering a wide mix of styles, subjects, and mediums such as oils, pastels, watercolor, graphite, colored pencil and sculpture. Included in the artists' mix are several members of the MAC Center Board of Directors, volunteers, and a number of art workshop instructors.



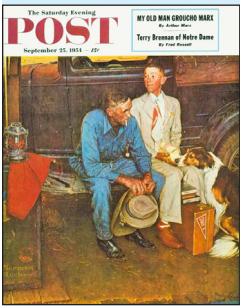
‹ Gallery 3

PERMANENT EXHIBIT

The Norman Rockwell Mystery

THE DON TRACHT REPLICAS FOUND BEHIND A SECRET WALL

Begin by watching a short video in our screening room. Then enter the gallery, turn right, and follow the timeline. Can you spot the clues to solve the \$15 million mystery?



Gallery 4 ›

PERMANENT EXHIBIT

Portals to the Past

COVERED BRIDGES IN ART AND HISTORY

How — and why — would you construct a covered bridge? Learn the art, science, and craftsmanship behind these iconic wooden marvels — plus tools, scale models, and locator map. (Hint: there are three historic covered bridges within a 10-minute drive!)



› MAC Center Gift Shop

RETURN HERE FOR SOUVENIRS AND YOUR FREE MAP OF LOCAL COVERED BRIDGES

We feature the work of regional artists, as well as gifts related to covered bridges and Vermont, Bennington, and the beautiful Green Mountains that we call home. Ask about nearby eateries & historical attractions!



The MAC Center is an ADA-accessible complex with reserved parking, elevators, bathrooms, assistive listening, and theatre seating for people with disabilities.



Bennington's
MONUMENT
ARTS & CULTURAL CENTER

SELF-GUIDED TOUR / GALLERY MAP

